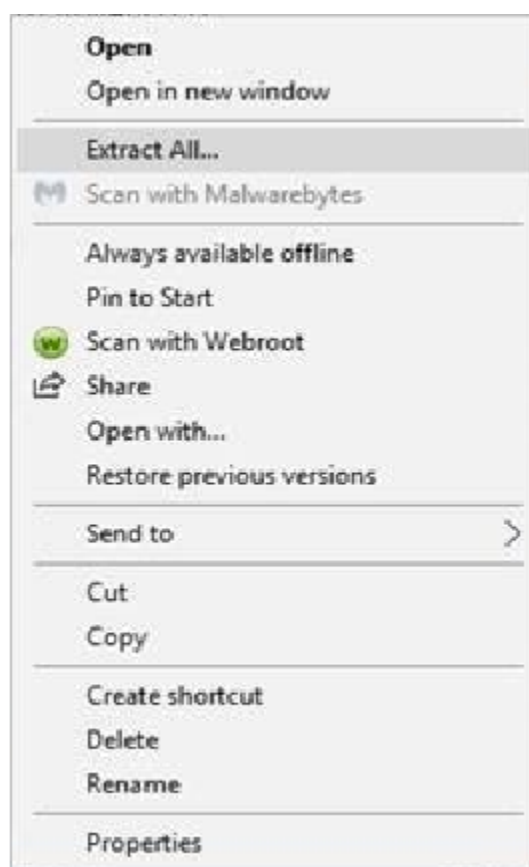
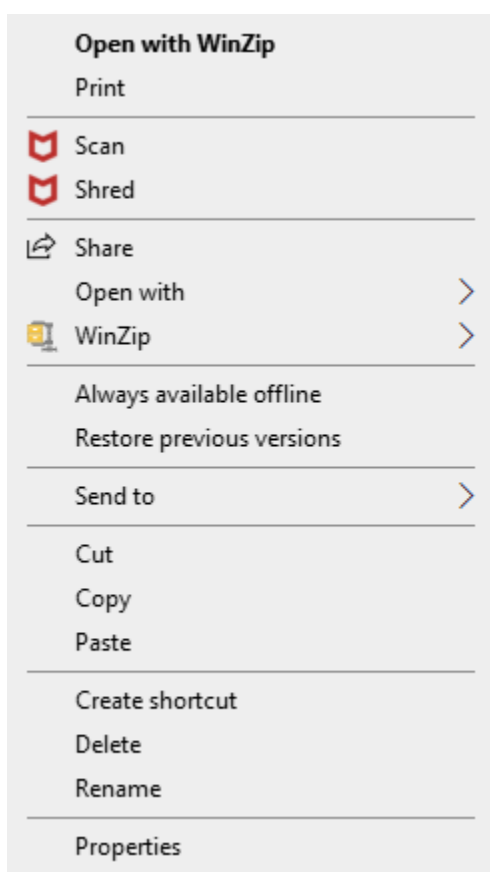


PRINT THESE INSTRUCTIONS AND READ IN THEIR ENTIRETY BEFORE STARTING THE INSTALLATION.

Before downloading InstallPackage.Zip, create a folder on your desktop called Casa Install. Next, download InstallPackage.Zip to your desktop.

Right click InstallPackage.Zip from your desktop and select either “Extract All” or “Open With Winzip”.



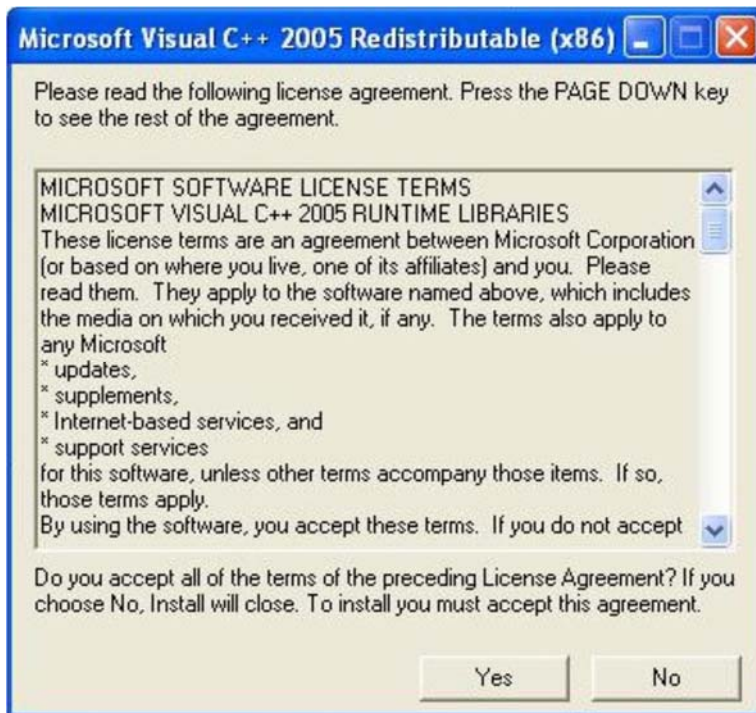
When asked where to put everything, respond in the Casa Install folder on your desktop.

Once the contents of InstallPackage.Zip are placed in folder Casa Install, delete InstallPackage.Zip.

Open the Casa Install folder on your desktop. Then, double click folder Install Package. It should look like this.

Name	Date modified	Type
Image32	10/17/2019 12:54 PM	File folder
Image64a	10/17/2019 12:54 PM	File folder
MRI2924	10/17/2019 12:54 PM	File folder
cwblaunch.exe	1/16/2010 9:22 PM	Application
presetup.cmd	10/11/2019 1:03 PM	Windows Comma...
regmod.vbs	10/11/2019 1:03 PM	VBScript Script File
vcredist_x64.EXE	12/6/2013 9:09 AM	Application
vcredist_x86.EXE	12/6/2013 9:09 AM	Application

Double click vcredist_x64.EXE. The following screen should appear.



Click Yes. It should take about a minute to complete.

Repeat for vcredist_x86.EXE.

You are now ready to install the software.

Name	Date modified	Type
Image32	10/17/2019 12:54 PM	File folder
Image64a	10/17/2019 12:54 PM	File folder
MRI2924	10/17/2019 12:54 PM	File folder
cwblaunch.exe	1/16/2010 9:22 PM	Application
presetup.cmd	10/11/2019 1:03 PM	Windows Comma...
regmod.vbs	10/11/2019 1:03 PM	VBScript Script File
vcredist_x64.EXE	12/6/2013 9:09 AM	Application
vcredist_x86.EXE	12/6/2013 9:09 AM	Application

Double click cwblaunch

If you get the panel below, it means you did not run vcredist_x64.EXE or vcredist_x86.EXT Run them, then start the install again.

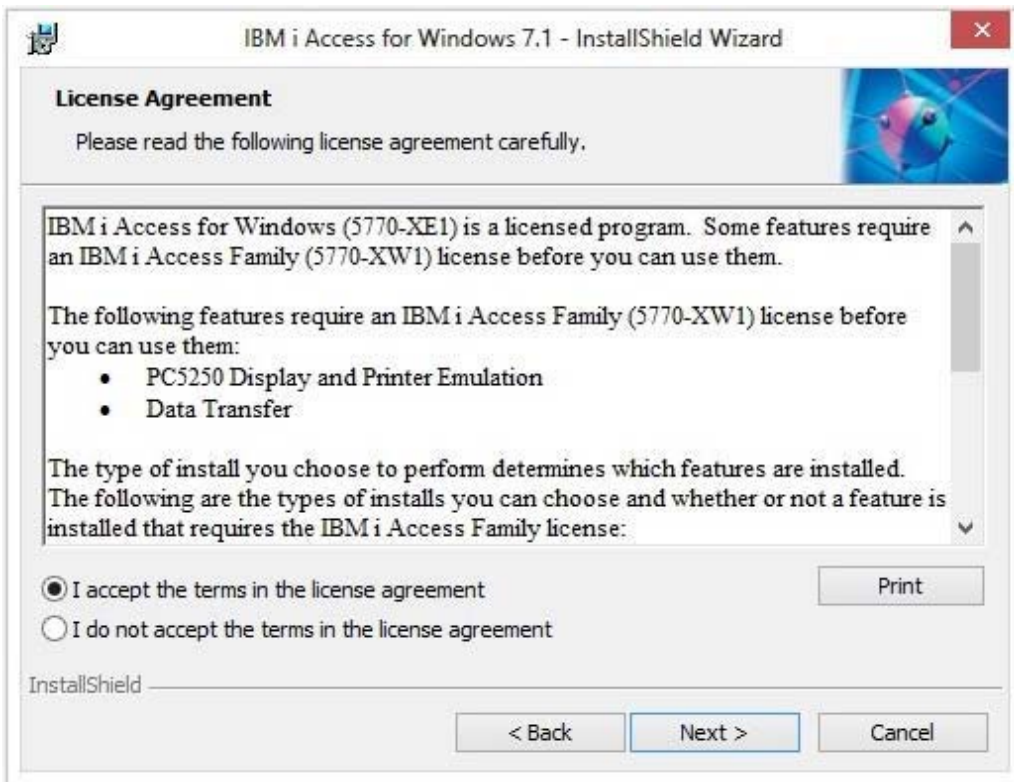


IF DURING THE INSTALLATION YOU RECEIVE A MESSAGE THAT A RESTART IS PENDING, CANCEL THE INSTALLATION AND PERFORM THE INSTRUCTIONS IN DOCUMENT RESTART PENDING FIX. WHEN COMPLETED, START THE INSTALLATION AGAIN.

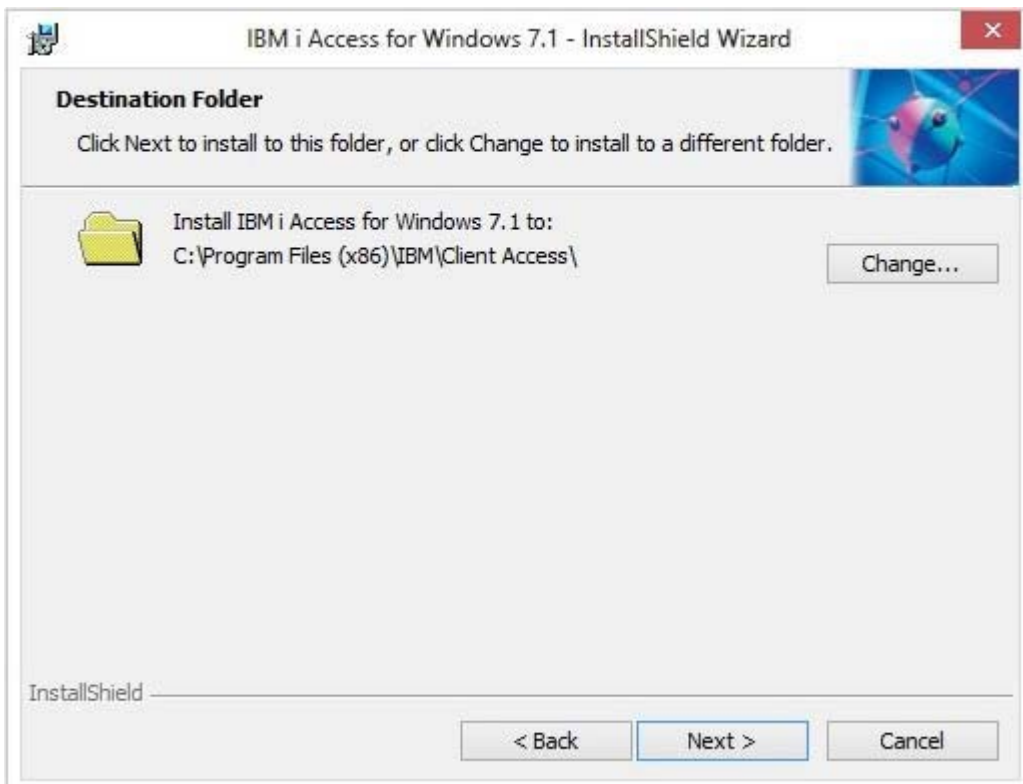
The first panel that should appear will look like this.



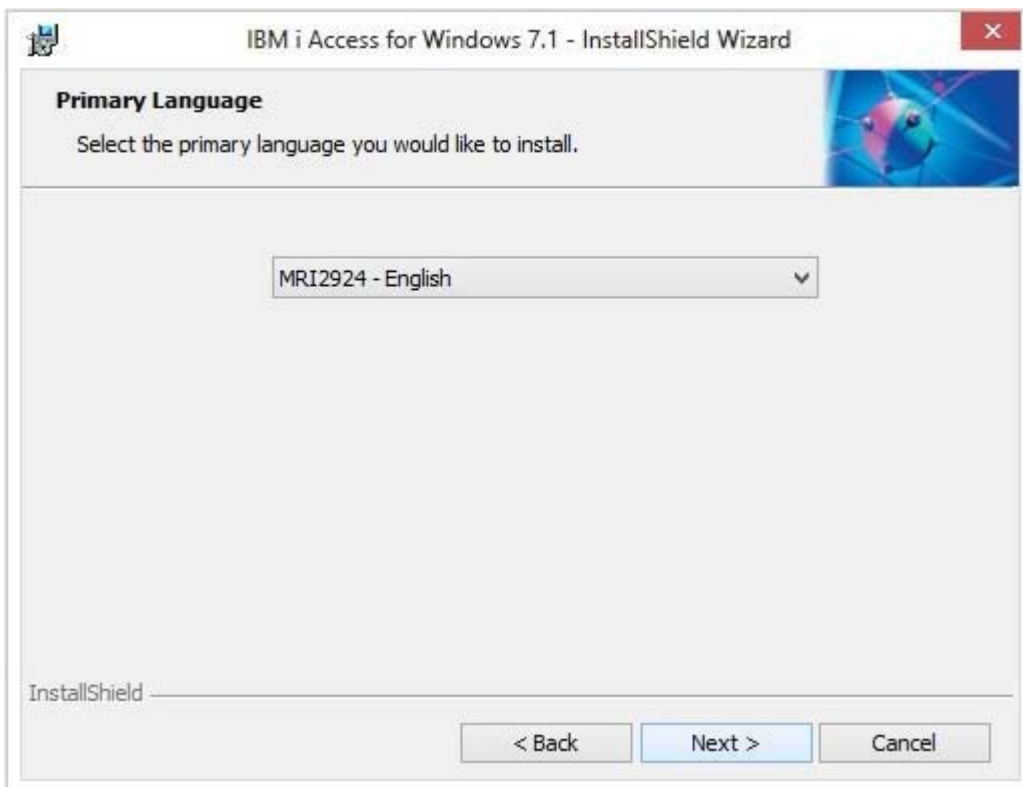
Click Next.



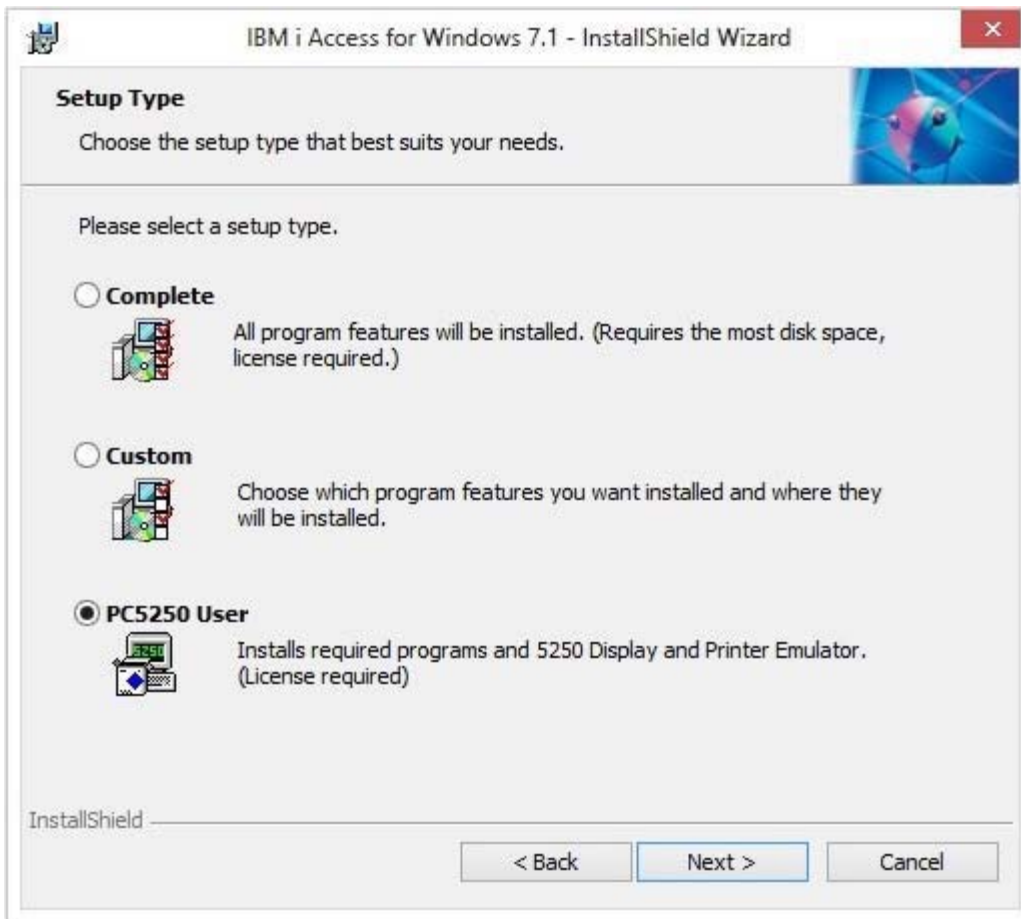
Click "I accept the terms in the license agreement", then click next.



Click Next. **DO NOT CLICK CHANGE**



Click Next.



Click PC5250 User, then click Next.







Click Install.



Click Finish.

The installation is complete.

Open the Casa Install folder on your desktop.

Name	Date modified	Type
 Install Package	10/17/2019 12:56 PM	File folder
 casa.kmp	4/12/2007 8:32 AM	Text Document
 Display.ws	10/17/2019 11:24 AM	WS File
 Printer.ws	10/17/2019 11:24 AM	WS File

Move both Printer.Ws and Display.WS to your desk top.

Move casa.kmp to

c:\program files (x86)\IBM\Client Access\Emulator\Private

At this point the installation is complete and you may delete folder Casa Install from your desktop.

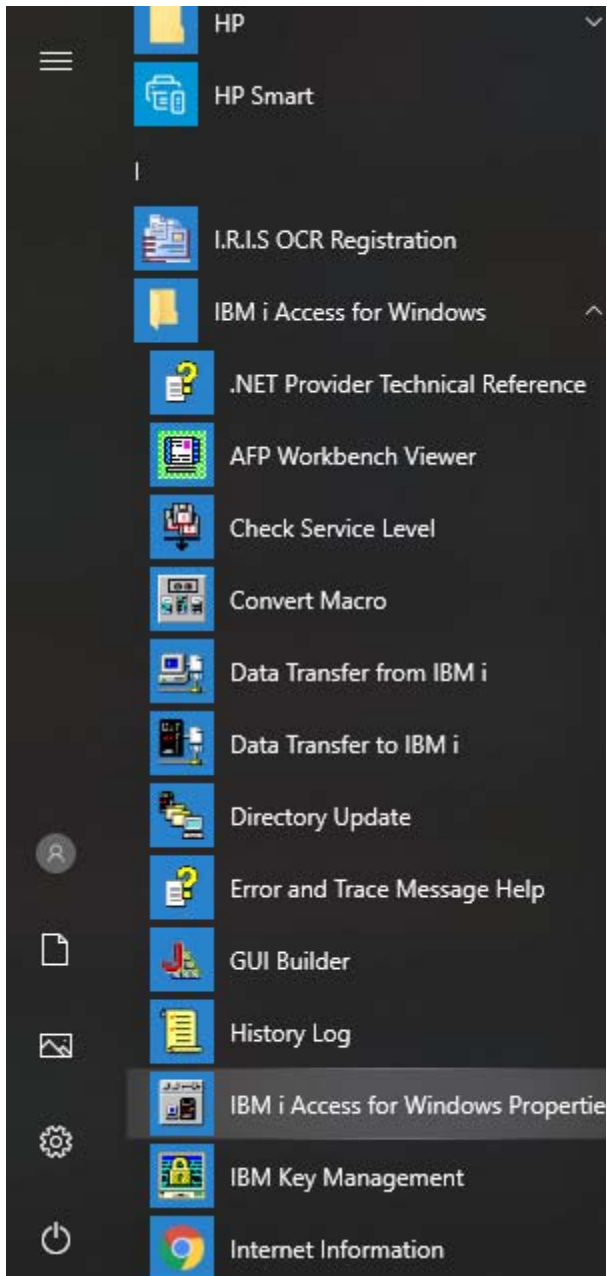
The next several pages are instructions for configuring the application.

Setting the Application Properties

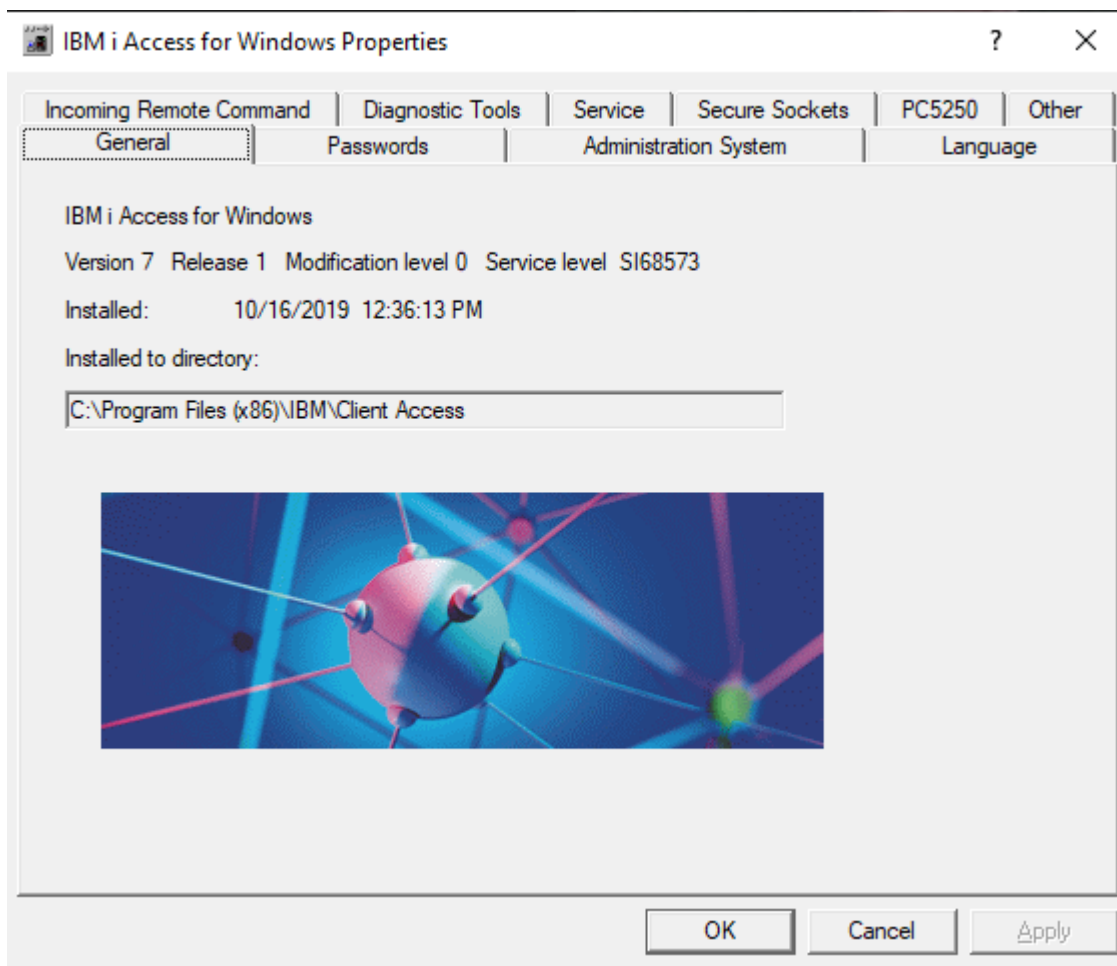
Click the start button.

Click IBM i Access for Windows.

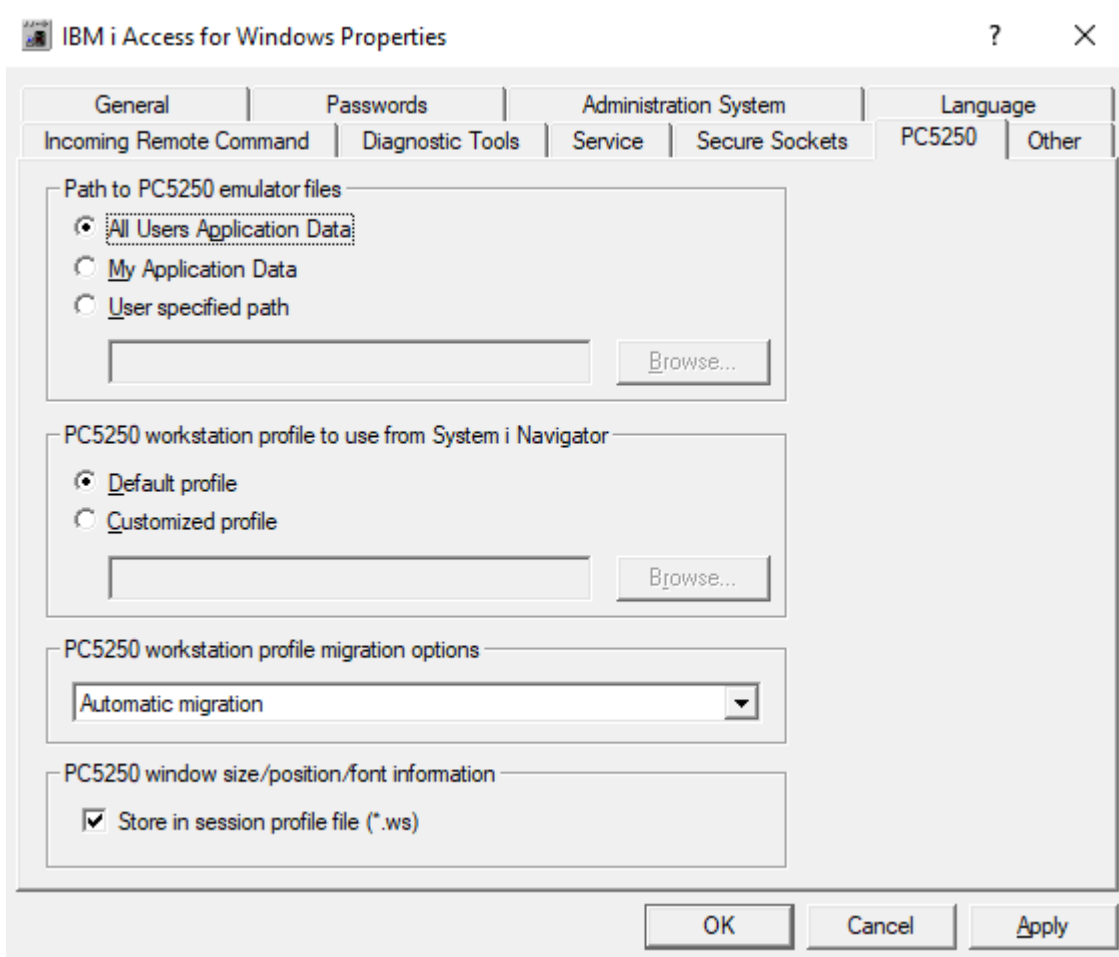
Click IBM i Access For Windows Properties



The following panel will appear.



Click the PC5250 tab.



In the Path to PC5250 emulator files, click the dot next to All Users Application Data.

Verify PC5250 workstation profile to use from System I Navigator is Default Profile.

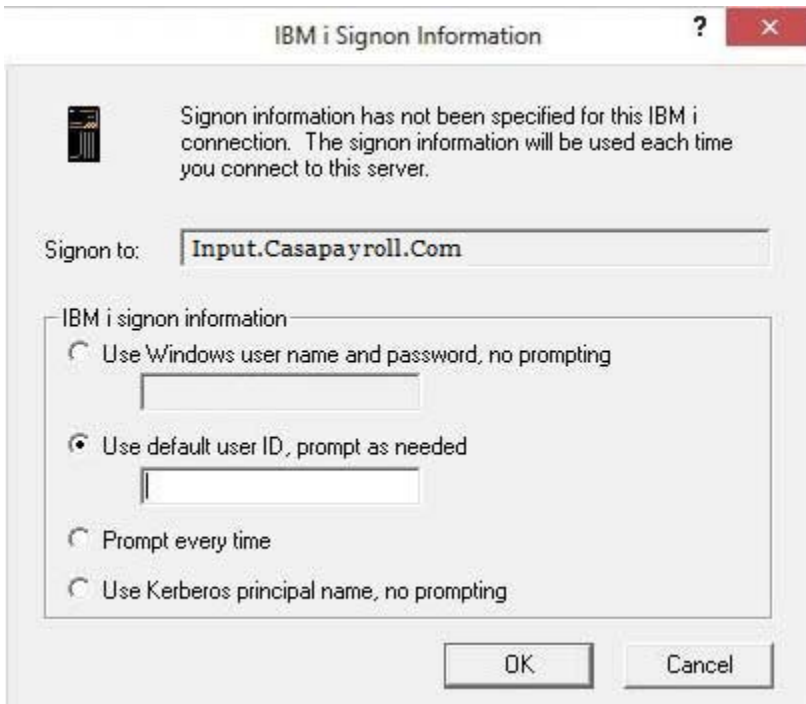
Verify PC5250 workstation profile migration options is set to Automatic migration.

Verify PC5250 window size/position/font information Store in session profile file (*.ws) is checked.

Click Apply, then OK.

Initializing Log On Properties

When you start the Printer or Display for the first time you may get the following panel. When you do, follow the instructions below. You will only get it the first time.

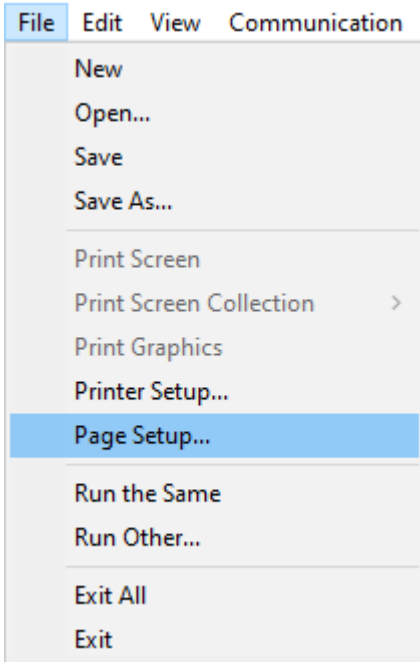


The screenshot shows a dialog box titled "IBM i Signon Information" with a question mark icon and a close button. The main text reads: "Signon information has not been specified for this IBM i connection. The signon information will be used each time you connect to this server." Below this, there is a "Signon to:" label and a text box containing "Input.Casapayroll.Com". A section titled "IBM i signon information" contains four radio button options: "Use Windows user name and password, no prompting" (with an empty text box below it), "Use default user ID, prompt as needed" (which is selected and has an empty text box below it), "Prompt every time", and "Use Kerberos principal name, no prompting". At the bottom are "OK" and "Cancel" buttons.

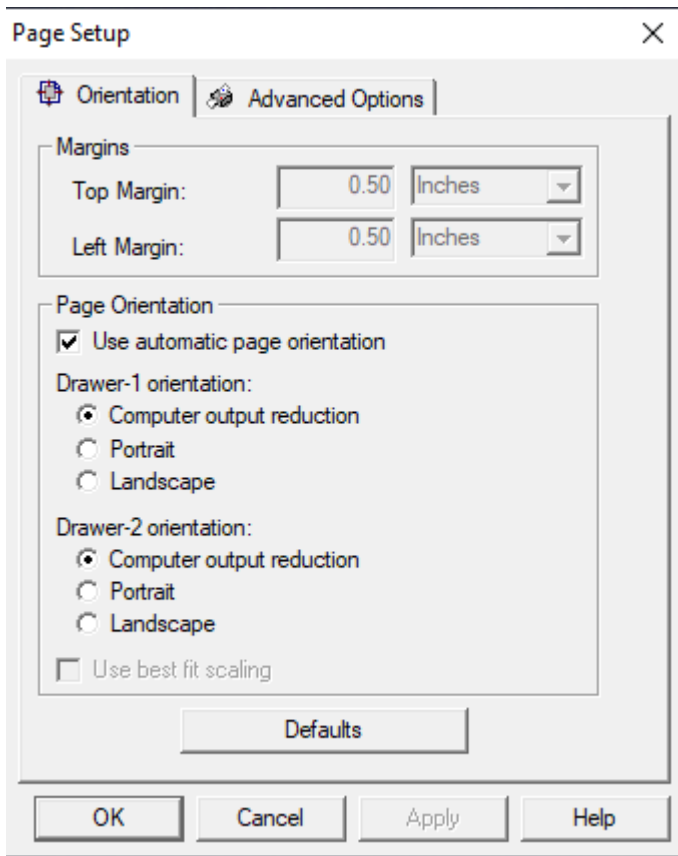
If you will be logging into one account only, click Use default user ID, enter your user ID (PCU?????) in the box, then click OK. You will only need to enter the password when you log in. The user ID will always be provided. If you will be logging into multiple accounts OR you wish to have an added level of security, click prompt every time, then click OK. This will require you to enter the user ID as well as the password.

Setting Printer Properties

When you start the PRINTER session for the first time, click File, then Page Setup.



Make sure the page setup panel looks EXACTLY like this.



If it doesn't, change it, click Apply, then click OK.